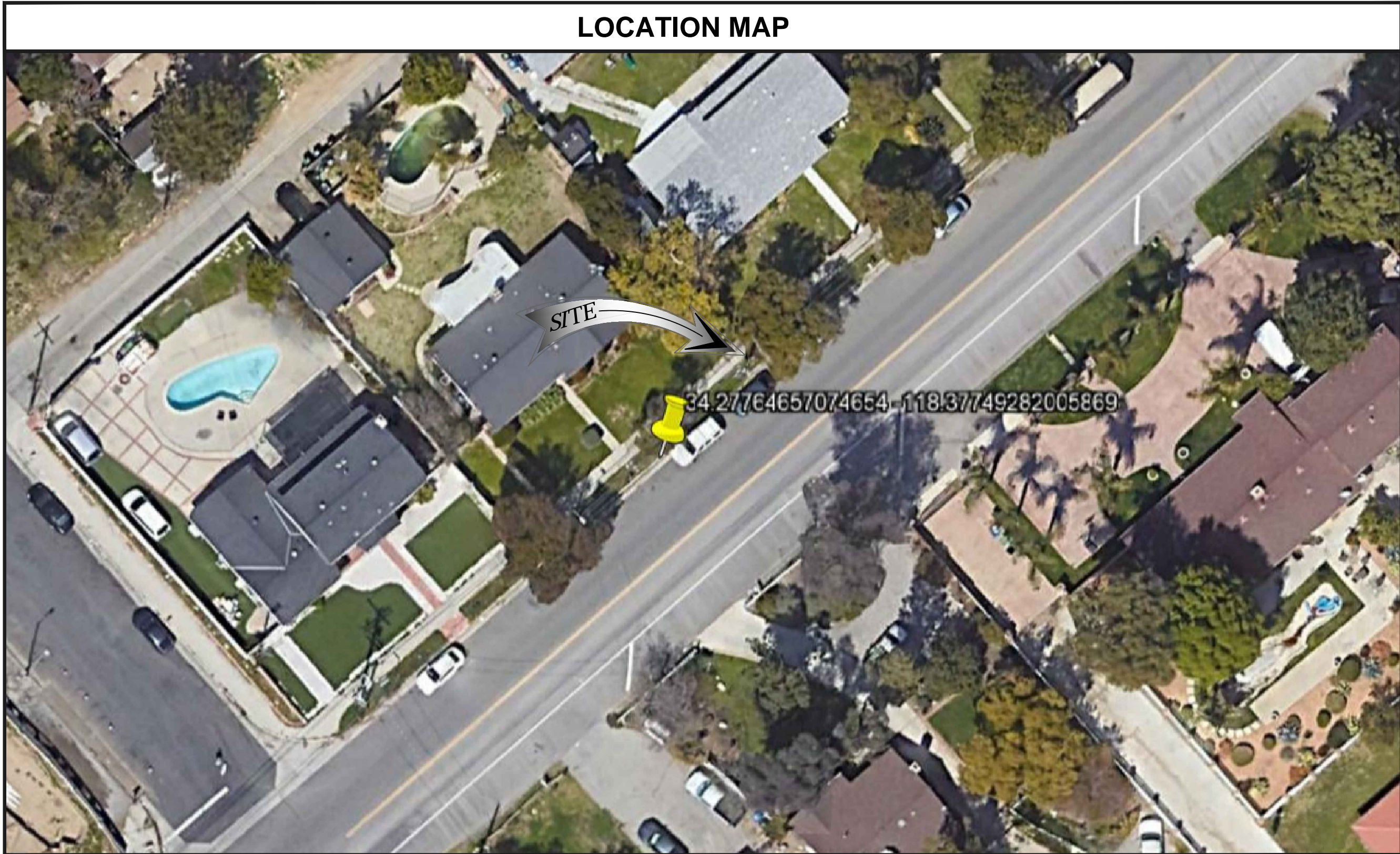


- 2B SCOPE OF WORK
- THIS PROJECT MODIFICATION OF EXISTING CONSISTS OF:
- INSTALLATION OF (2) (N) ALPHA PN-4 POWERNODE SYSTEM ENCLOSURES
 - INSTALLATION OF (18) (N) 12V ALPHA 210FTX BATTERIES
 - INSTALLATION OF (1) (N) PRECAST CONCRETE PAD
 - REMOVAL & REPLACEMENT OF (E) POWER SUPPLY
 - ALL ASSOCIATED ELECTRIC WIRES AND CONDUITS TO CONNECT POWERNODE CABINET TO EXISTING ALPHA CABINET



SITE ID: AD051X_AD051A

SITE ADDRESS:
11301 W OSBORNE ST ,
SYLMAR, CA 91342

SITE INFORMATION

SITE ADDRESS: 11301 W OSBORNE ST
SYLMAR, CA 91342

LATITUDE/LONGITUDE (NAD 83): 34.27764657, -118.3774928

JURISDICTION: CITY OF LOS ANGELES

POWER PROVIDER: EDISON ELECTRIC

STRUCTURE TYPE: UTILITY POLE

OUTPUT VOLTAGE SPEC.: 90

INPUT VOLTAGE SPEC.: 122.4

AMP DRAW: 6



9260 TOPANGA CANYON BLVD
CHATSWORTH CA, 91311



3767 ALPHA WAY
BELLINGHAM, WA 98226



23 MAUCHLY, STE 110
IRVINE, CA 92618

J5 PROGRAM ID: ALP-CA-CPUC
J5 PROJECT ID: P-065638

ISSUE STATUS

REV	DATE	DESCRIPTION	BY
A	11/02/21	90% CD	II
B	11/05/21	90% CD	JW
0	12/13/21	100% CD	CG
1	02/24/22	LA CITY REQ. UPDATE	MZ
Δ	07/21/22	PCC #1	JW
Δ	08/23/22	PCC #2	JW
C	9/28/2022	PER CITY COMMENT	VVD

LANDSCAPING NOTE

WHEN NO IMMEDIATE EXISTING LANDSCAPING IS ONSITE & IN THE LOCATION OF PROPOSED CABINET(S), PROPOSED LANDSCAPING IS REQUIRED TO BE PLANTED ON BOTH SIDES OF THE PROPOSED CABINET(S). FRONT & BACK OF PROPOSED CABINET(S) TO NOT BE OBSTRUCTED. GALLON BUSH ON EACH SIDE OF PROPOSED CABINET

CONDITION NOTE

IF THE PAVED SIDEWALK IS LESS THAN 6 FEET WIDE, ADDITIONAL CONCRETE SIDEWALK SHALL BE CONSTRUCTED TO PROVIDE A MINIMUM 6 FEET WIDE PAVED SIDEWALK BETWEEN THE ADJAGE OF CABINET AND THE PROPERTY LINE.

NOTE ALL EXISTING UTILITIES THAT PROPOSED LINE CROSSED SHOULD BE POTHOLE.

NOTES:

1. ALL EXISTING STRUCTURES TO BE PROTECTED IN PLACE.
2. RESTORE LANDSCAPING & IRRIGATION IN KIND.

NOTES:

- (N) : PROPOSED WORK UNDER THE BOE PERMIT
- (E) : EXISTING STRUCTURE NOT A PART OF THE BOE PERMIT

*ATTACHMENT "A" & "B"

STREET LIGHTING NOTES TO THE CONTRACTOR

The contractor shall protect and maintain all street lighting facilities existing in the work area. Should any damage to the street lighting system occur, the contractor shall immediately notify the Bureau of Street Lighting, Field Operations Division at (323) 913-4744. After 4:30 PM Monday through Thursday, or 3:30 PM on Friday, contact the Electric Trouble Board of the Department of Water and Power at (800) 821-5278 from the (213) area code, or (800) 821-5279 from the (818) area code.

The contractor shall arrange for the immediate repair and restoration of the damaged street lighting system at no cost to the City. A licensed electrical contractor is required to make all repairs necessary to the street lighting facilities.

The contractor shall install all proposed facilities 12 inches clear of the street lighting foundations, pullboxes, and conduits, except where otherwise stated herein. Two business days prior to working near the street lighting circuit the contractor shall arrange for the presence of a City of Los Angeles, Public Works inspector, (213) 485-5080 or (818) 374-1188, to verify all clearance requirements are met. Where a conflict exists between the street lighting facilities and the proposed improvements, approval for relocation of the street lighting facilities may be obtained by contacting the Street Lighting Engineer at (213) 847-1551.

The contractor shall proceed with extreme caution when working near the high voltage series circuit. Unauthorized work on the series circuit can result in severe injury or death. The contractor shall notify the Bureau of Street Lighting, Field Operations Division (323) 913-4744 two business days prior to working near the street lighting circuit.

This plan has been reviewed by the Bureau of Street Lighting and approved for the encroachment of new utilities within the Bureau of Street Lighting easement as specified hereon and within this plan:

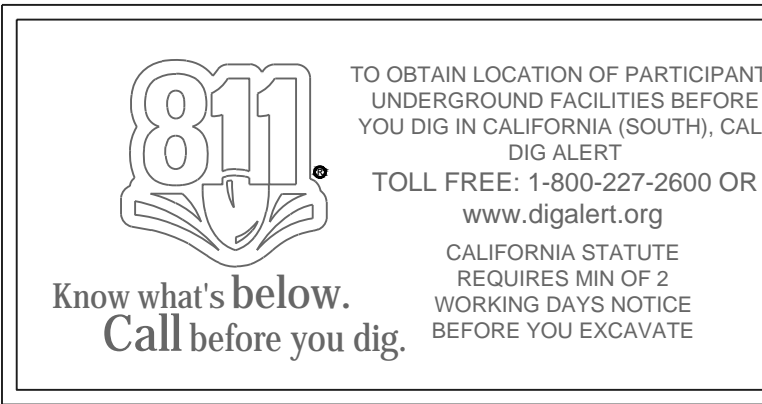
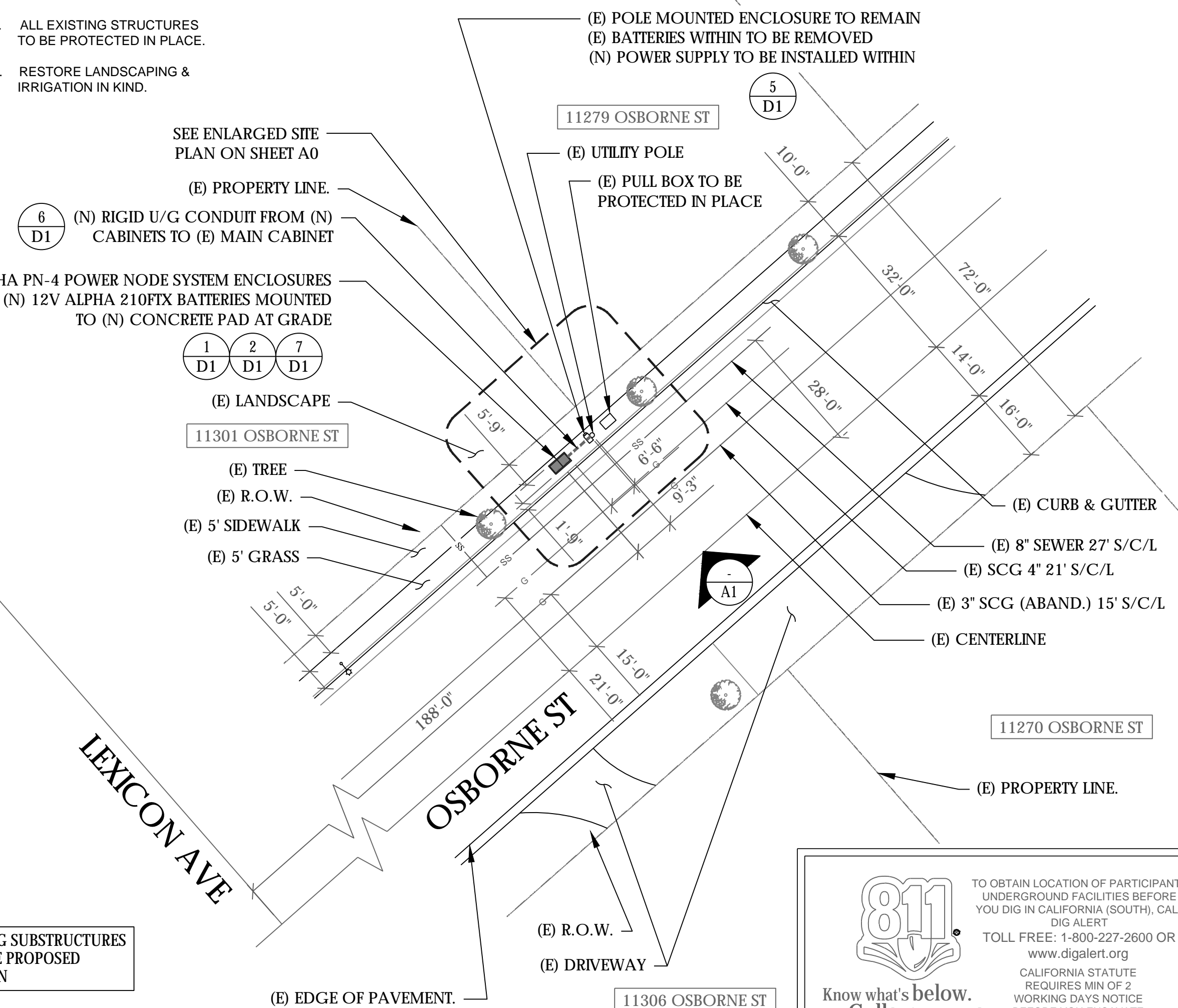
of vault/cabinet locations: _____ # of conduit locations: _____

Linear footage of conduit: _____ If _____

Approved By: _____ Date _____

Executive Director, Bureau of Street Lighting

ONLY THOSE EXISTING SUBSTRUCTURES WITHIN 10-FT OF THE PROPOSED CONDUIT ARE SHOWN



24"x36" SCALE: 1" = 20'-0"
11"x17" SCALE: 1" = 40'-0"
20' 10' 0' 20'

SITE PLAN

DRAWING INDEX

SHEET	DESCRIPTION
T1	TITLE SHEET AND SITE PLAN
A0	ENLARGED SITE PLANS
A1	ELEVATIONS
D1	DETAILS
TC1	TRAFFIC CONTROL

PROJECT TEAM

OWNER: CHARTER COMMUNICATIONS
9260 TOPANGA CANYON BLVD
CHATSWORTH CA, 91311

ENGINEER/ ARCHITECT: J5 INFRASTRUCTURE PARTNERS
JOSE M. MIRANDA
ARCHITECT/ENGINEER CONTACT
PH: (949) 247-7767
EMAIL: jmiranda@j5p.com
23 MAUCHLY, SUITE 110
IRVINE, CALIFORNIA, 92618

APPLICANT: ALPHA TECHNOLOGIES, INC.
RICHARD A. SEIFF
SERVICE OPERATIONS MANAGER
ENERGY SYSTEMS AMERICAS
PH: (331) 276-0232
EMAIL: rich.seiff@enersys.com

CODE COMPLIANCE

ALL WORK AND MATERIALS SHALL BE PERFORMED AND INSTALLED IN ACCORDANCE WITH THE CURRENT EDITIONS OF THE FOLLOWING CODES AS ADOPTED BY THE LOCAL GOVERNING AUTHORITIES. NOTHING IN THESE PLANS IS TO BE CONSTRUED TO PERMIT WORK NOT CONFORMING TO THESE CODES.

1. CALIFORNIA BUILDING STANDARDS CODE: 2019 TRIENNIAL EDITION OF TITLE 24, WITH AN EFFECTIVE DATE OF JANUARY 1, 2020.

PART 1 - CALIFORNIA ADMINISTRATIVE CODE
PART 2 - CALIFORNIA BUILDING CODE, BASED ON THE 2018 INTERNATIONAL BUILDING CODE
PART 2.5 - CALIFORNIA RESIDENTIAL CODE, BASED ON THE 2018 INTERNATIONAL RESIDENTIAL CODE
PART 3 - CALIFORNIA ELECTRICAL CODE, BASED ON THE 2017 NATIONAL ELECTRICAL CODE
PART 4 - CALIFORNIA MECHANICAL CODE, BASED ON THE 2018 INTERNATIONAL MECHANICAL CODE
PART 5 - CALIFORNIA PLUMBING CODE, BASED ON THE 2018 UNIFORM PLUMBING CODE
PART 6 - CALIFORNIA ENERGY CODE
PART 7 - VACANT

PART 8 - CALIFORNIA HISTORICAL BUILDING CODE
PART 9 - CALIFORNIA FIRE CODE, BASED ON THE 2018 INTERNATIONAL FIRE CODE
PART 10 - CALIFORNIA EXISTING BUILDING CODE, BASED ON THE 2018 INTERNATIONAL EXISTING BUILDING CODE
PART 11 - CALIFORNIA GREEN BUILDING STANDARDS CODE (ALSO KNOWN AS CALGREEN)
PART 12 - CALIFORNIA REFERENCED STANDARDS CODE
2. ANSI/TIA-222 (REV H)
3. 2018 NFPA 101, LIFE SAFETY CODE
4. 2019 NFPA 72, NATIONAL FIRE ALARM AND SIGNALING CODE
5. 2019 NFPA 13, STANDARD FOR THE INSTALLATION OF SPRINKLER SYSTEMS

GENERAL CONTRACTOR NOTES

DO NOT SCALE DRAWINGS IF NOT FULL SIZE (24 X 36)

CONTRACTOR SHALL VERIFY ALL PLANS AND EXISTING DIMENSIONS AND CONDITIONS ON THE JOB SITE AND SHALL IMMEDIATELY NOTIFY THE ARCHITECT/ ENGINEER IN WRITING OF ANY DISCREPANCIES BEFORE PROCEEDING WITH THE WORK OR BEAR THE RESPONSIBILITY FOR THE SAME.

SEAL

SITE INFORMATION

SITE ID:
AD051X_AD051A

SITE ADDRESS:
11301 W OSBORNE ST ,
SYLMAR, CA 91342

SHEET TITLE:

TITLE SHEET

T1

*ATTACHMENT "A" & "B"

STREET LIGHTING NOTES TO THE CONTRACTOR

The contractor shall protect and maintain all street lighting facilities existing in the work area. Should any damage to the street lighting system occur, the contractor shall immediately notify the Bureau of Street Lighting, Field Operations Division at (323) 913-4744. After 4:30 PM Monday through Thursday, or 3:30 PM on Friday, contact the Electric Trouble Board of the Department of Water and Power at (800) 821-5278 from the (213) area code, or (800) 821-5279 from the (818) area code.

The contractor shall arrange for the immediate repair and restoration of the damaged street lighting system at no cost to the City. A licensed electrical contractor is required to make all repairs necessary to the street lighting facilities.

The contractor shall install all proposed facilities 12 inches clear of the street lighting foundations, pullboxes, and conduits, except where otherwise stated herein. Two business days prior to working near the street lighting circuit the contractor shall arrange for the presence of a City of Los Angeles, Public Works inspector, (213) 485-5080 or (818) 374-1188, to verify all clearance requirements are met. Where a conflict exists between the street lighting facilities and the proposed improvements, approval for relocation of the street lighting facilities may be obtained by contacting the Street Lighting Engineer at (213) 847-1551.

The contractor shall proceed with extreme caution when working near the high voltage series circuit. Unauthorized work on the series circuit can result in severe injury or death. The contractor shall notify the Bureau of Street Lighting, Field Operations Division (323) 913-4744 two business days prior to working near the street lighting circuit.

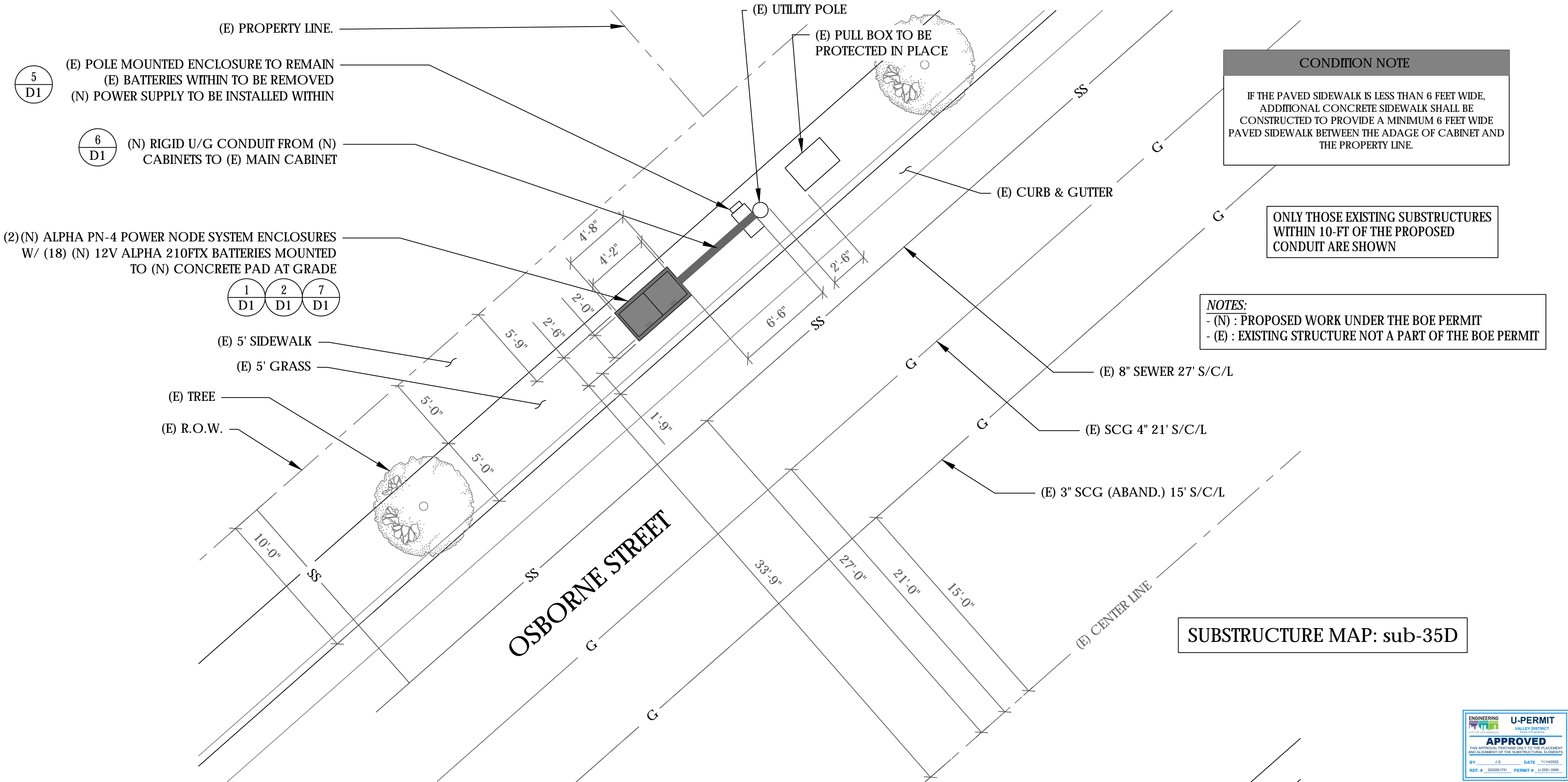
This plan has been reviewed by the Bureau of Street Lighting and approved for the encroachment of new utilities within the Bureau of Street Lighting easement as specified hereon and within this plan:

of vault/cabinet locations: # of conduit locations:

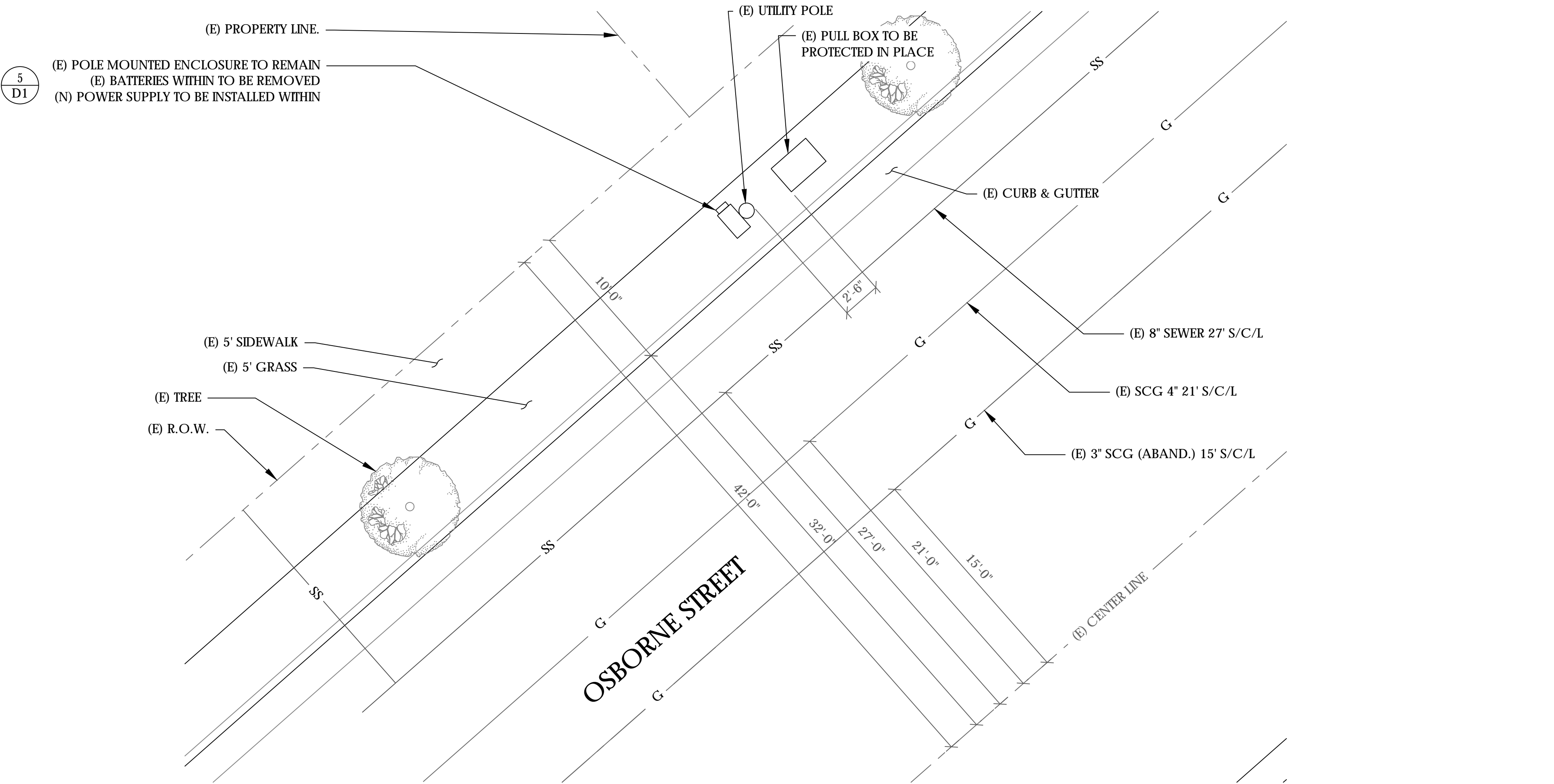
Linear footage of conduit: lf

Approved By: Date

Executive Director, Bureau of Street Lighting



PROPOSED ENLARGED SITE PLAN



EXISTING ENLARGED SITE PLAN



9260 TOPANGA CANYON BLVD
CHATSORTH CA, 91311



3767 ALPHA WAY
BELLINGHAM, WA 98226



23 MAUCHLY, STE 110
IRVINE, CA 92618

J5 PROGRAM ID: ALP-CA-CPUC
J5 PROJECT ID: P-065638

ISSUE STATUS

REV	DATE	DESCRIPTION	BY
A	11/02/21	90% CD	II
B	11/05/21	90% CD	JW
0	12/13/21	100% CD	CG
1	02/24/22	LA CITY REQ. UPDATE	MZ
Δ	07/21/22	PCC #1	JW
Δ	08/23/22	PCC #2	JW
C	9/28/2022	PER CITY COMMENT	VVD

SEAL

SITE INFORMATION

SITE ID:
AD051X_AD051A

SITE ADDRESS:
11301 W OSBORNE ST ,
SYLMAR, CA 91342

SHEET TITLE:
ENLARGED
SITE PLANS

A0

ATTACHMENT A & B

STREET LIGHTING NOTES TO THE CONTRACTOR

The contractor shall protect and maintain all street lighting facilities existing in the work area. Should any damage to the street lighting system occur, the contractor shall immediately notify the Bureau of Street Lighting, Field Operations Division at (323) 913-4744. After 4:30 PM Monday through Thursday, or 3:30 PM on Friday, contact the Electric Trouble Board of the Department of Water and Power at (800) 821-5278 from the (213) area code, or (800) 821-5279 from the (818) area code.

The contractor shall arrange for the immediate repair and restoration of the damaged street lighting system at no cost to the City. A licensed electrical contractor is required to make all repairs necessary to the street lighting facilities.

The contractor shall install all proposed facilities 12 inches clear of the street lighting foundations, pullboxes, and conduits, except where otherwise stated herein. Two business days prior to working near the street lighting circuit the contractor shall arrange for the presence of a City of Los Angeles, Public Works inspector, (213) 485-5080 or (818) 374-1188, to verify all clearance requirements are met. Where a conflict exists between the street lighting facilities and the proposed improvements, approval for relocation of the street lighting facilities may be obtained by contacting the Street Lighting Engineer at (213) 847-1551.

The contractor shall proceed with extreme caution when working near the high voltage series circuit. Unauthorized work on the series circuit can result in severe injury or death. The contractor shall notify the Bureau of Street Lighting, Field Operations Division (323) 913-4744 two business days prior to working near the street lighting circuit.

This plan has been reviewed by the Bureau of Street Lighting and approved for the encroachment of new utilities within the Bureau of Street Lighting easement as specified hereon and within this plan:

of vault/cabinet locations:

of conduit locations:

Linear footage of conduit:

If

Approved By:

Executive Director, Bureau of Street Lighting

Date

CONDUIT ROUTING NOTE:
1. GC TO ROUTE (N) 1-1/2" RIGID U/G CONDUIT FROM (N) CABINETS TO (E) MAIN CABINET FOR (N) BATTERY & INTERFACE ASSOCIATED CABLING. SEE TRENCHING DETAIL ON SHEET D1.

NOTES:
1. CONTRACTOR TO COMPLY WITH ALL APPLICABLE/REQUIRED INSPECTIONS PER LOCAL JX GUIDELINES.
2. CONTRACTOR SHALL BE AWARE OF (E) PEDESTRIAN AND VEHICLE ACCESS. CONTRACTOR SHALL NOT BLOCK WALKWAYS, DRIVEWAYS AND/OR OTHER FORMS OF ACCESS. CONTRACTOR SHALL REACH OUT TO ENGINEER IF REVISIONS TO DESIGN HEREON ARE REQUIRED.

CONDITION NOTE
IF THE PAVED SIDEWALK IS LESS THAN 6 FEET WIDE, ADDITIONAL CONCRETE SIDEWALK SHALL BE CONSTRUCTED TO PROVIDE A MINIMUM 6 FEET WIDE PAVED SIDEWALK BETWEEN THE ADAGE OF CABINET AND THE PROPERTY LINE.

9260 TOPANGA CANYON BLVD
CHATSORTH CA, 91311

3767 ALPHA WAY
BELLINGHAM, WA 98226

23 MAUCHLY, STE 110
IRVINE, CA 92618

J5 PROGRAM ID: ALP-CA-CPUC
J5 PROJECT ID: P-065638

ISSUE STATUS

REV	DATE	DESCRIPTION	BY
A	11/02/21	90% CD	II
B	11/05/21	90% CD	JW
0	12/13/21	100% CD	CG
1	02/24/22	LA CITY REQ. UPDATE	MZ
A	07/21/22	PCC #1	JW
B	08/23/22	PCC #2	JW
C	9/28/2022	PER CITY COMMENT	VVD

SEAL

SITE INFORMATION

SITE ID:
AD051X_AD051A

SITE ADDRESS:
11301 W OSBORNE ST ,
SYLMAR, CA 91342

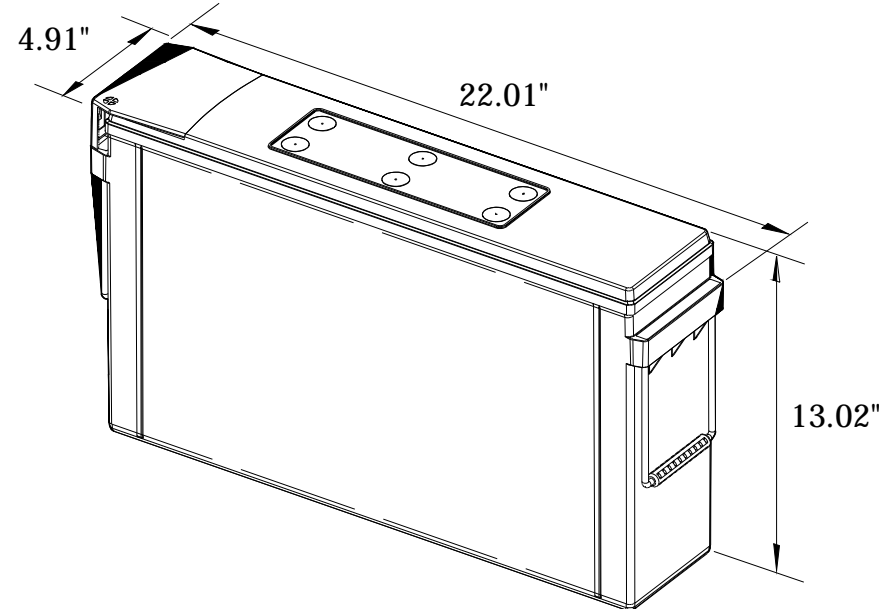
SHEET TITLE:

ELEVATIONS

A1



ALPHA
210 FIX BATTERY UNIT



EQUIPMENT SPECIFICATIONS (1 UNIT)

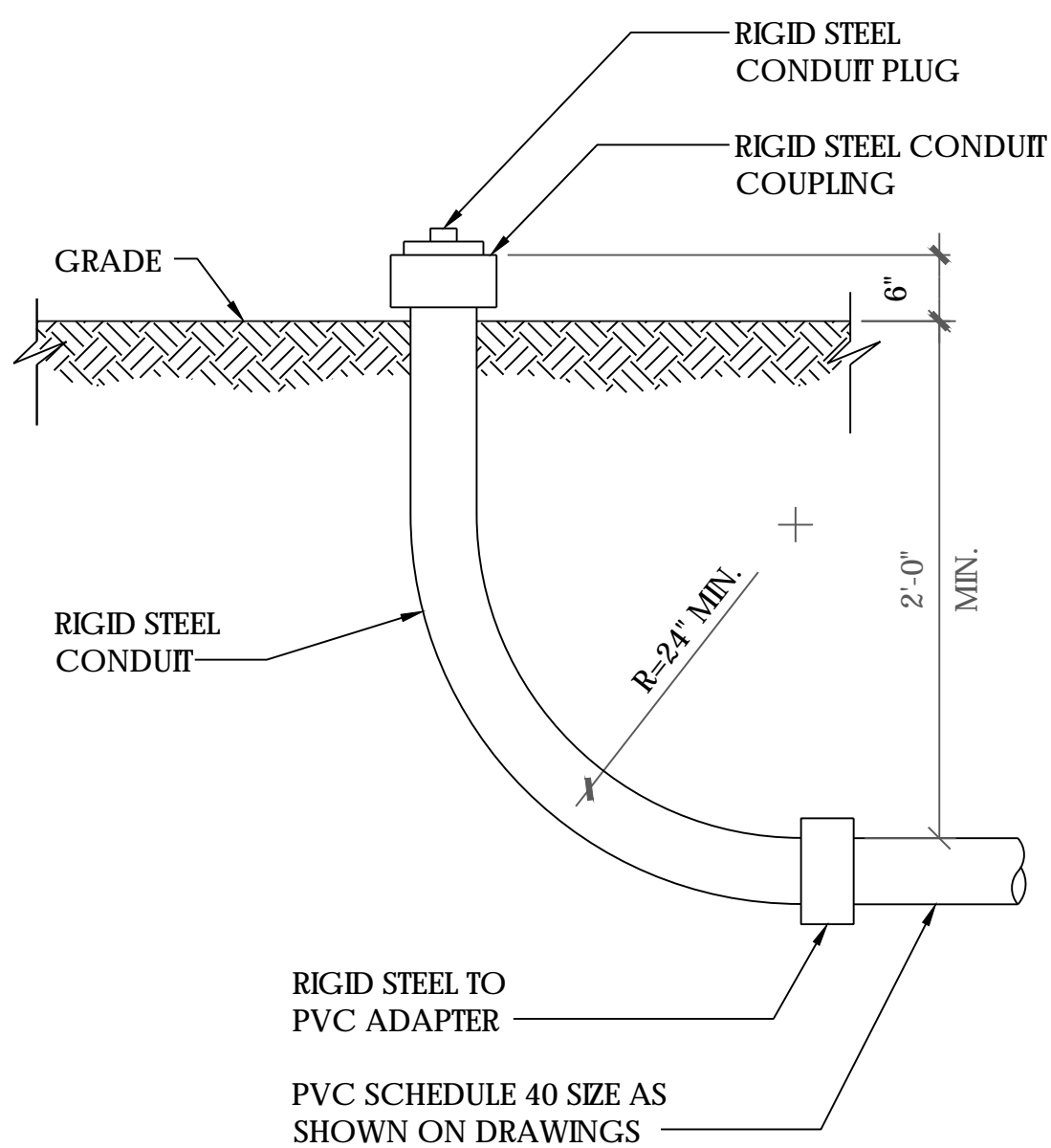
MFG: ALPHA
MODEL: 210 FIX
HEIGHT: 13.02 IN
WIDTH: 4.91 IN
LENGTH: 22.01 IN

WEIGHT: 145 LBS

BATTERY INFORMATION (VRLA TYPE BATTERIES)

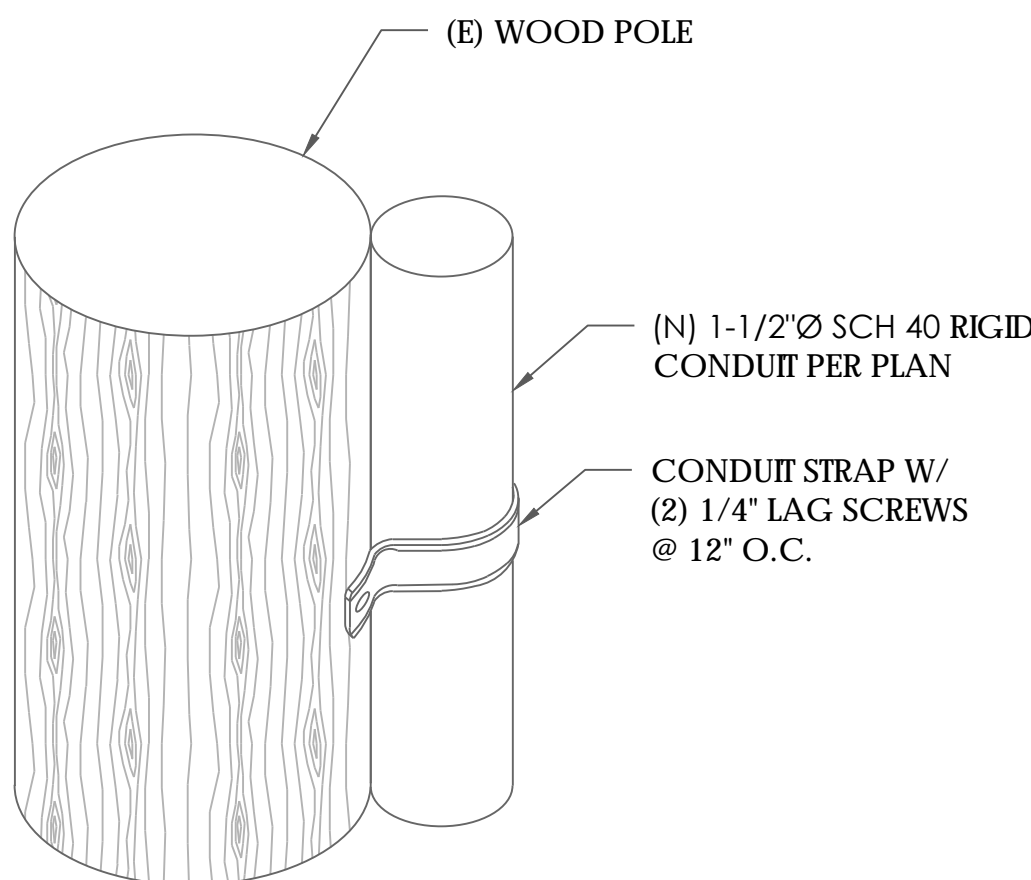
INSTALL STATUS	BATTERY MODEL	TOTAL # OF BATTERY UNITS INSTALLED	VOLTAGE (V)	AMP- HOURS (AH)	KWh, Kilowatt- hours = (V*AH)/1000	TOTAL BATTERY CAPACITY, KWh	STATIONARY BATTERY STORAGE SYSTEM THRESHOLD QUANTITY, PER CFC 2019 SECTION 1206	STATIONARY BATTERY STORAGE SYSTEM CODE CHECK	TOTAL ELECTROLYTE VOLUME (GALLONS) PER UNIT	TOTAL ELECTROLYTE BY VOLUME (GALLONS) =
PROPOSED	ALPHACELL 210FTX	18	12	210	2.52	45.36			2.1	37.8
TOTAL		18				45.36	70	CFC 2019 SECTION 1206 DOES NOT APPLY		37.8

7 BATTERY SPECIFICATIONS
N.T.S.



8 STUB-UP DETAIL
N.T.S.

NOTE:
1. CONTRACTOR TO VERIFY RISER MOUNTING REQUIREMENTS W/ POLE OWNER AND/OR POWER COMPANY



9 CONDUIT RISER ATTACHMENT DETAIL
N.T.S.

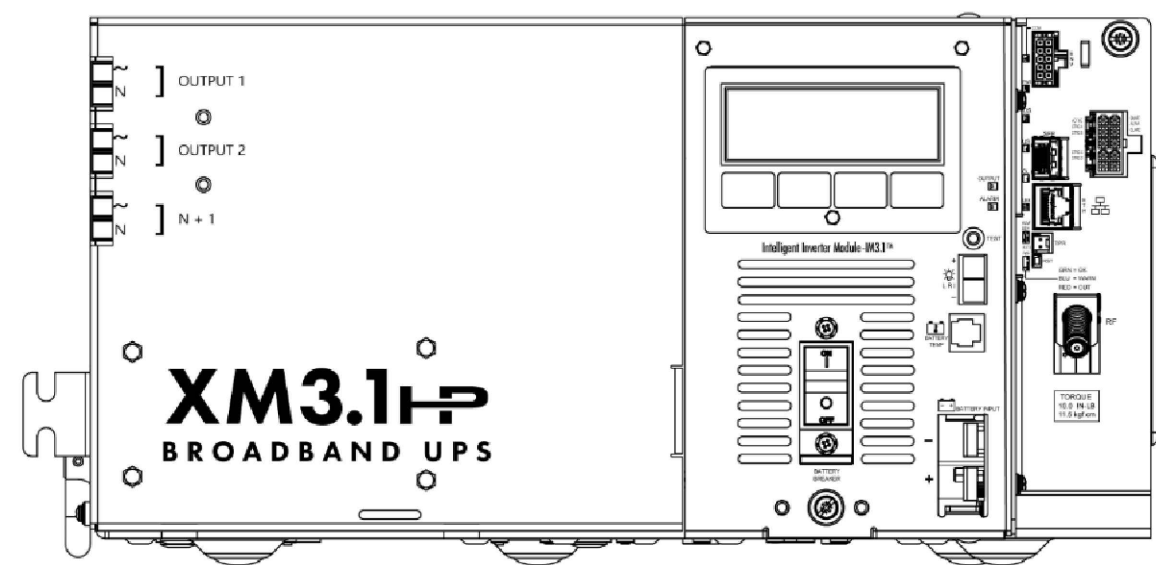
NOTE:
1. USE MANUFACTURER SUPPLIED MOUNTING HARDWARE.

NOMINAL INPUT VOLTAGE: 120V AC
OUTPUT VOLTAGE: 63/89V AC

EQUIPMENT SPECIFICATIONS

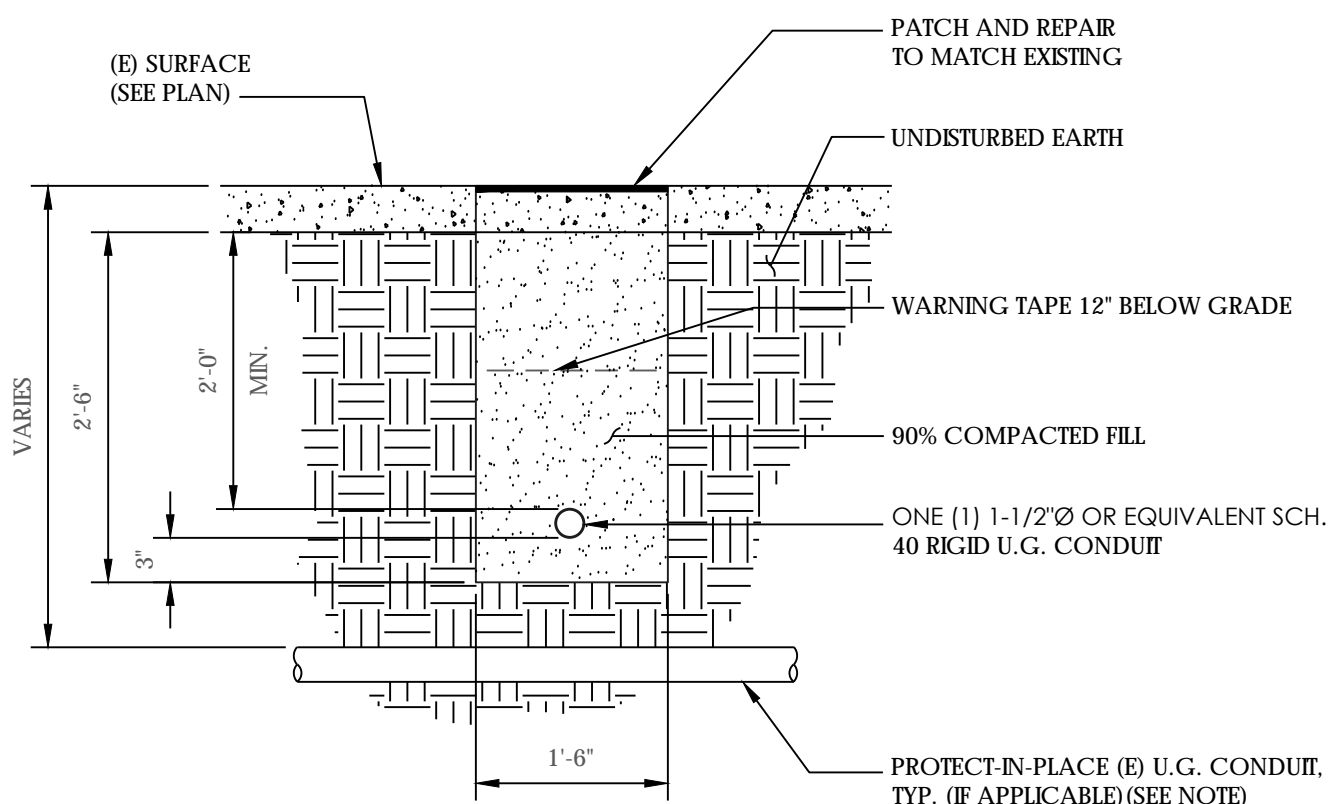
MFG: ALPHA
MODEL: XM3.1-HP
HEIGHT: 7.76 IN
WIDTH: 16.43 IN
DEPTH: 10.57 IN

WEIGHT: 61 LBS

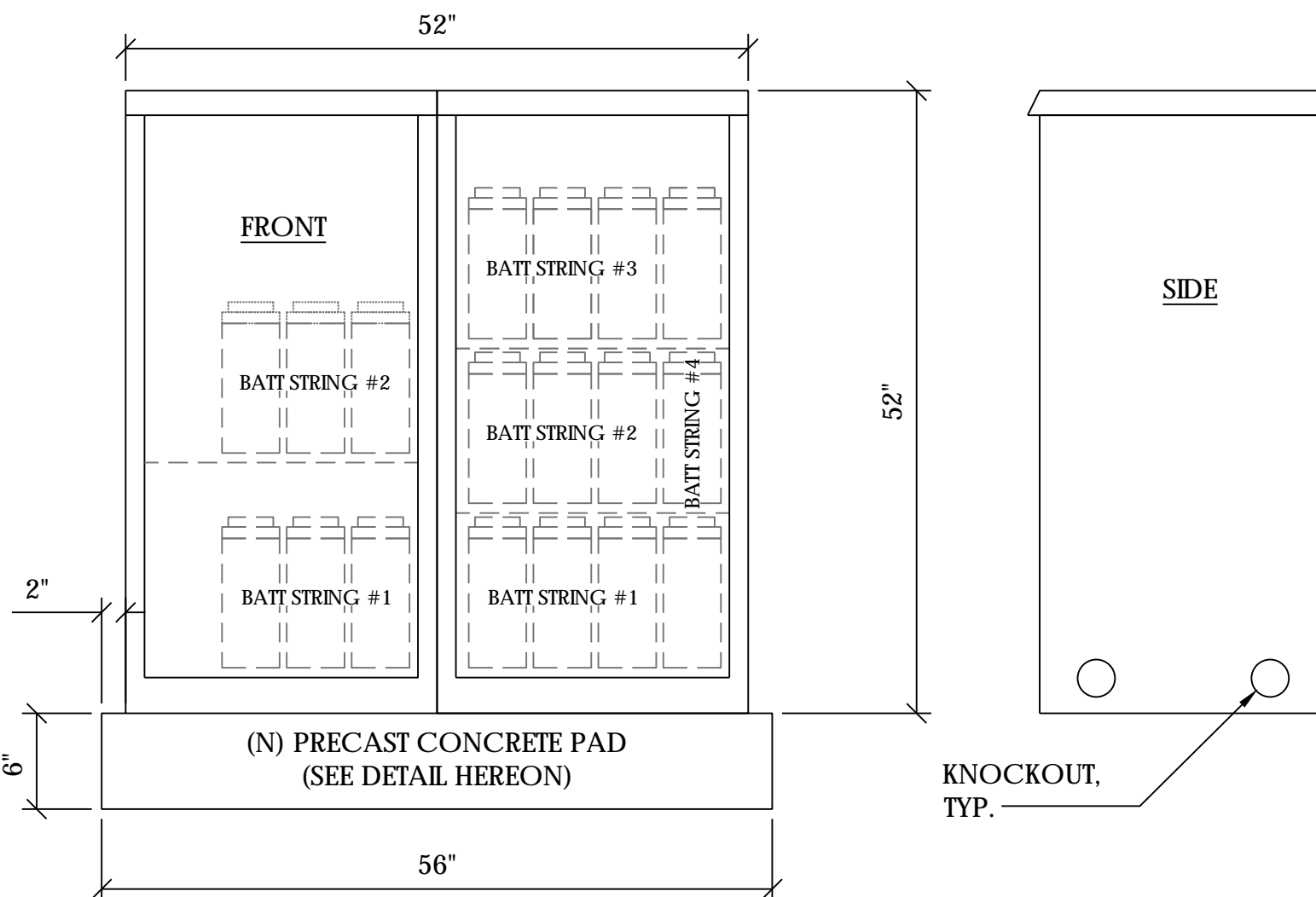


5 POWER SUPPLY DETAIL
N.T.S.

NOTE:
1. PRIOR TO STARTING CONSTRUCTION, THE CONTRACTOR HAS THE RESPONSIBILITY TO LOCATE ALL EXISTING UTILITIES, CONDUITS WHETHER OR NOT SHOWN ON THE PLANS, AND TO PROTECT THEM FROM DAMAGE.



6 TRENCHING DETAIL
N.T.S.



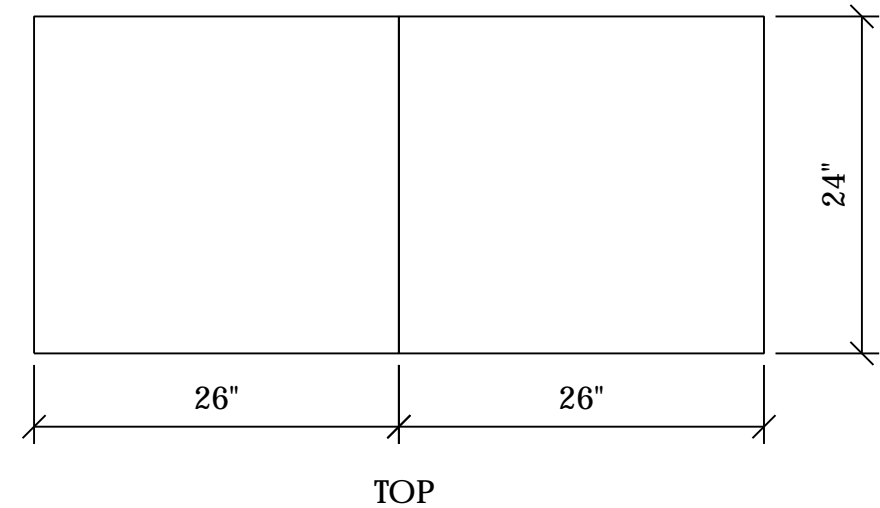
1 DUAL EQUIPMENT CABINET DETAIL
N.T.S.

CABINET SPECIFICATIONS

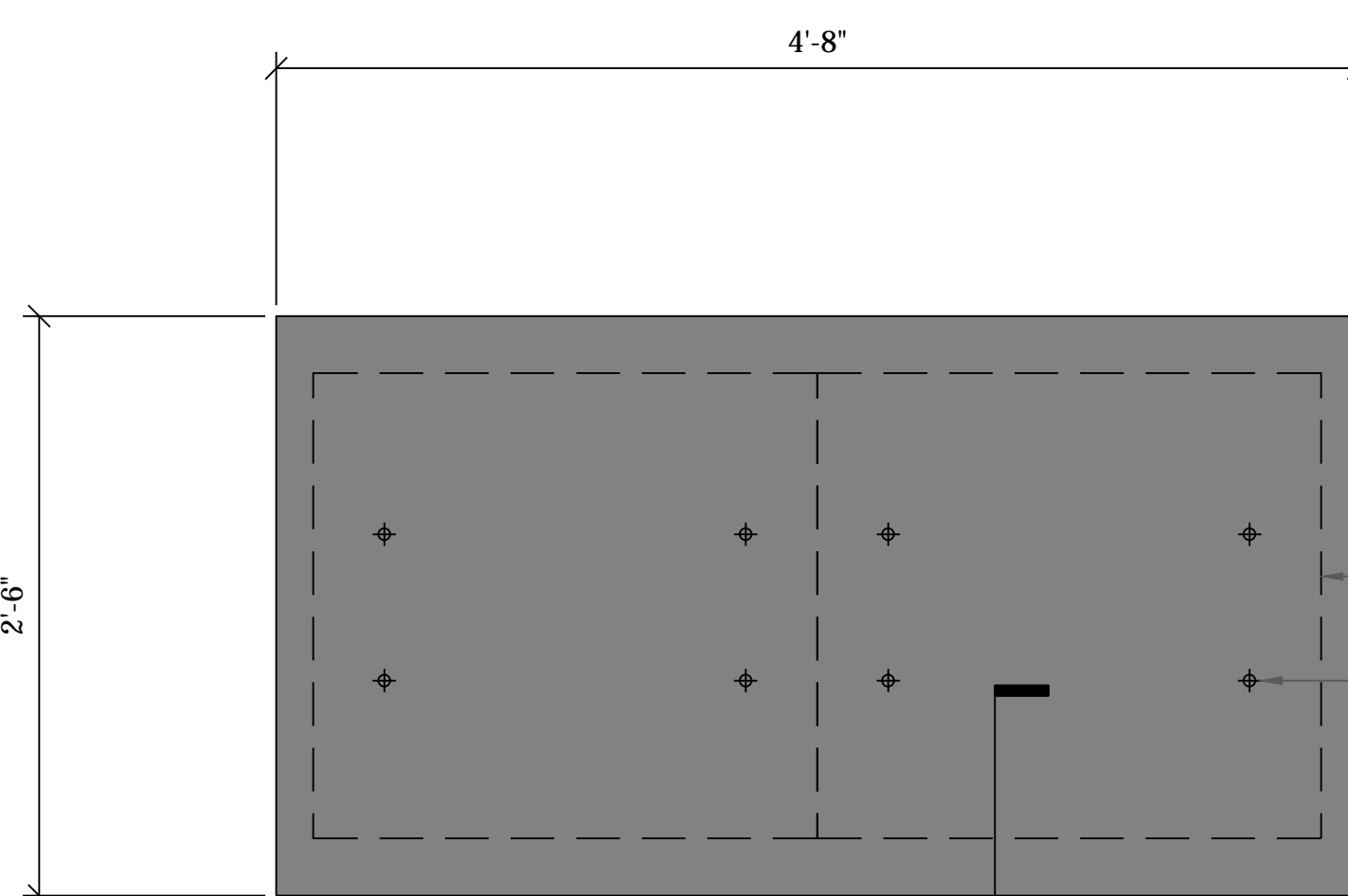
MANUFACTURER: ALPHA
MODEL: PN-4
HEIGHT: 52 inch
WIDTH: 26 inch
DEPTH: 24 inch
WEIGHT (EMPTY): 360 LBS.
WEIGHT (W/ BATTERIES): 2,970 LBS.

MATERIAL: ALUMINUM

BATTERY CONFIGURATION:
CABINET #1: (4) BATTERY STRINGS
CABINET #2: (2) BATTERY STRINGS



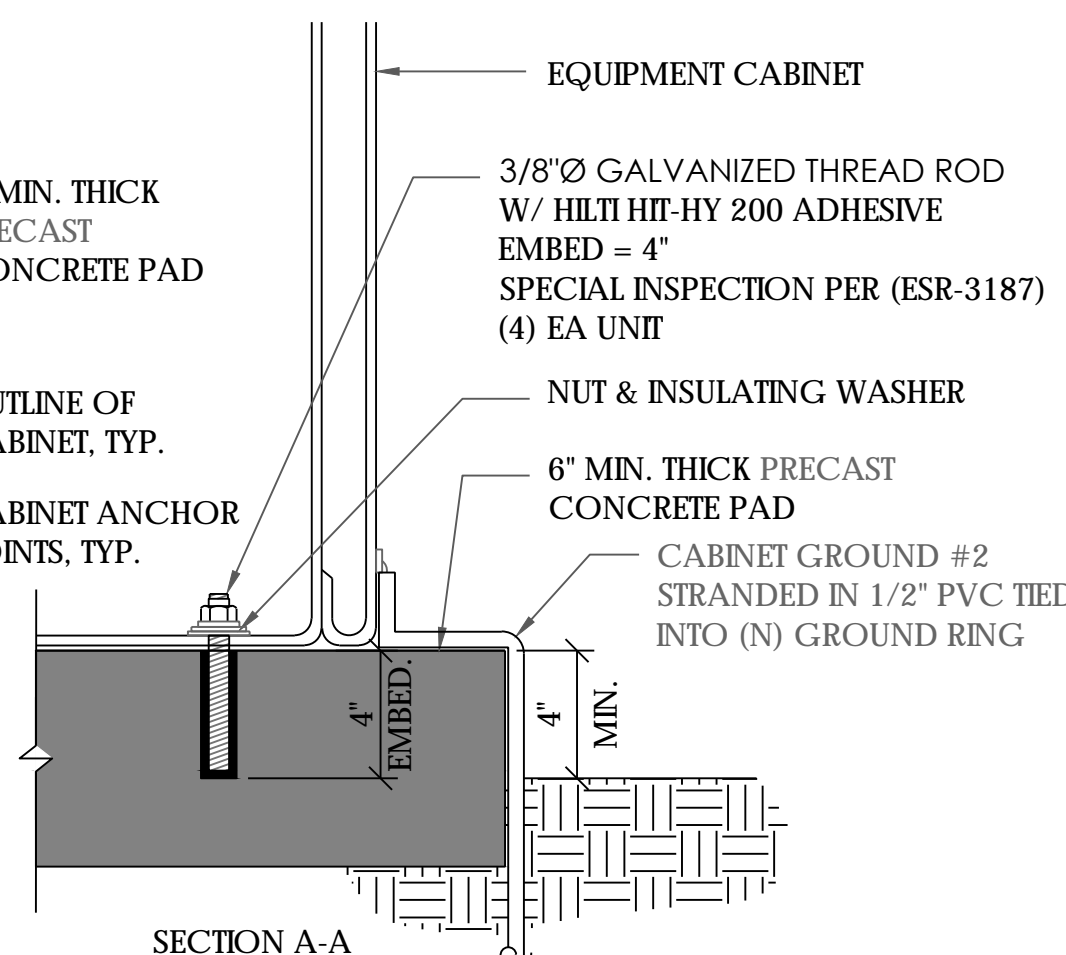
TOP



CONCRETE PADS SHALL BE A COLOR THAT IS CONSISTENT WITH ADJACENT SURROUNDING SIDEWALKS. IF THERE IS NO EXISTING SIDEWALK, CONCRETE PADS SHALL BE AN EARTH-TONE COLOR THAT IS CONSISTENT WITH THE EXISTING SURROUNDING EARTH.

2 CONCRETE PAD & ANCHORAGE DETAIL
N.T.S.

PLACE CONCRETE PAD MINIMUM 2" FROM NEARBY CONCRETE PAD(S)



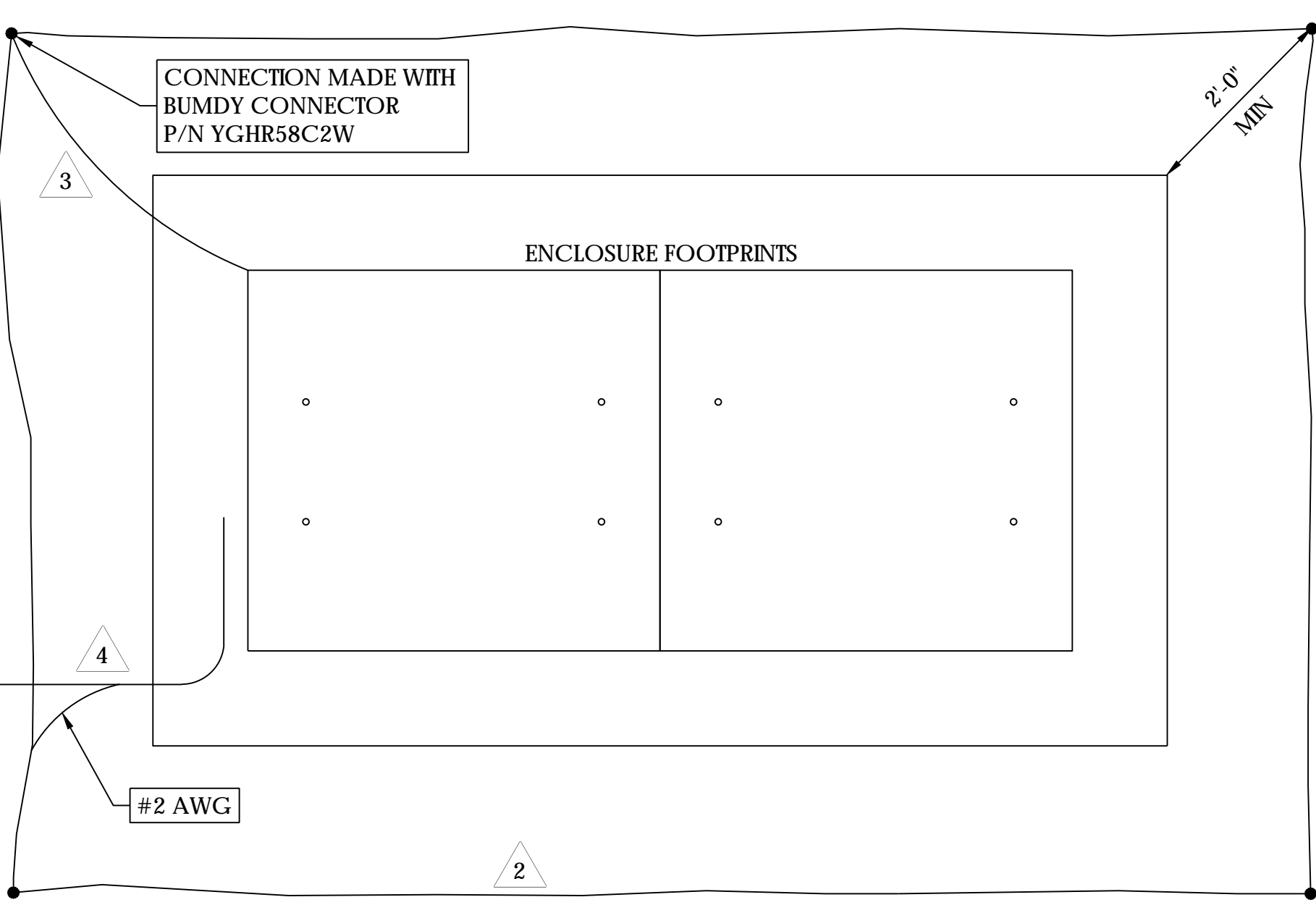
LIGHTNING PROTECTION (OPTIONAL)
1. 1/2"x8" COPPER GROUND ROD, FOUR PLACES, DRIVEN ABOUT 2 FEET (TYP.) FROM THE CORNERS OF THE PAD.
2. #2 BARE COPPER WIRE LOOP TERMINATED TO EACH GROUND ROD AND BURIED BELOW GRADE 18 INCHES. CORROSION-PROOF CONNECTIONS (25+ YEAR LIFE-SPAN) AND HARDWARE SUITABLE FOR DIRECT BURIAL MUST BE USED.
3. #2 BARE COPPER WIRE FROM LOOP TO THE ENCLOSURE.
4. WHEN THE ELECTRICAL SUPPLY IS A PRIMARY SERVICE (NOT A SECONDARY OR FEEDER SERVICE) A #2 BARE COPPER WIRE MUST BE BOND THE LIGHTNING PROTECTION LOOP TO THE GROUNDING ELECTRODE CONDUCTOR WHERE THEY ARE CLOSEST.

SERVICE GROUNDING (REQUIRED)
5. #6 BARE COPPER WIRE FROM SERVICE NEUTRAL/GROUND BAR WITH 2 GROUND RODS LOCATED 6" APART.

NOTE:
GROUND TEXT SHALL MEASURE LESS THAN 25 OHMS. IF EXCEEDED, CONTRACTOR TO INSTALL ADDITIONAL GROUND RODS AS REQUIRED.

TWO 8' GROUND RODS PLACED A MIN. OF 6' APART

3 GROUNDING DETAIL
N.T.S.



Charter
Spectrum

9260 TOPANGA CANYON BLVD
CHATSORTH CA, 91311

alpha
AN ENERSYS COMPANY

3787 ALPHA WAY
BELLINGHAM, WA 98226

J5 INFRASTRUCTURE
PARTNERS

23 MAUCHLY, STE 110
IRVINE, CA 92618

J5 PROGRAM ID: ALP-CA-CPUC
J5 PROJECT ID: P-065638

ISSUE STATUS

REV	DATE	DESCRIPTION	BY
A	11/02/21	90% CD	II
B	11/05/21	90% CD	JW
0	12/13/21	100% CD	CG
1	02/24/22	LA CITY REQ. UPDATE	MZ
A	07/21/22	PCC #1	JW
A	08/23/22	PCC #2	JW
C	9/28/2022	PER CITY COMMENT	VVD

SEAL

SITE INFORMATION

SITE ID:
AD051X_AD051A

SITE ADDRESS:
11301 W OSBORNE ST ,
SYLMAR, CA 91342

SHEET TITLE:

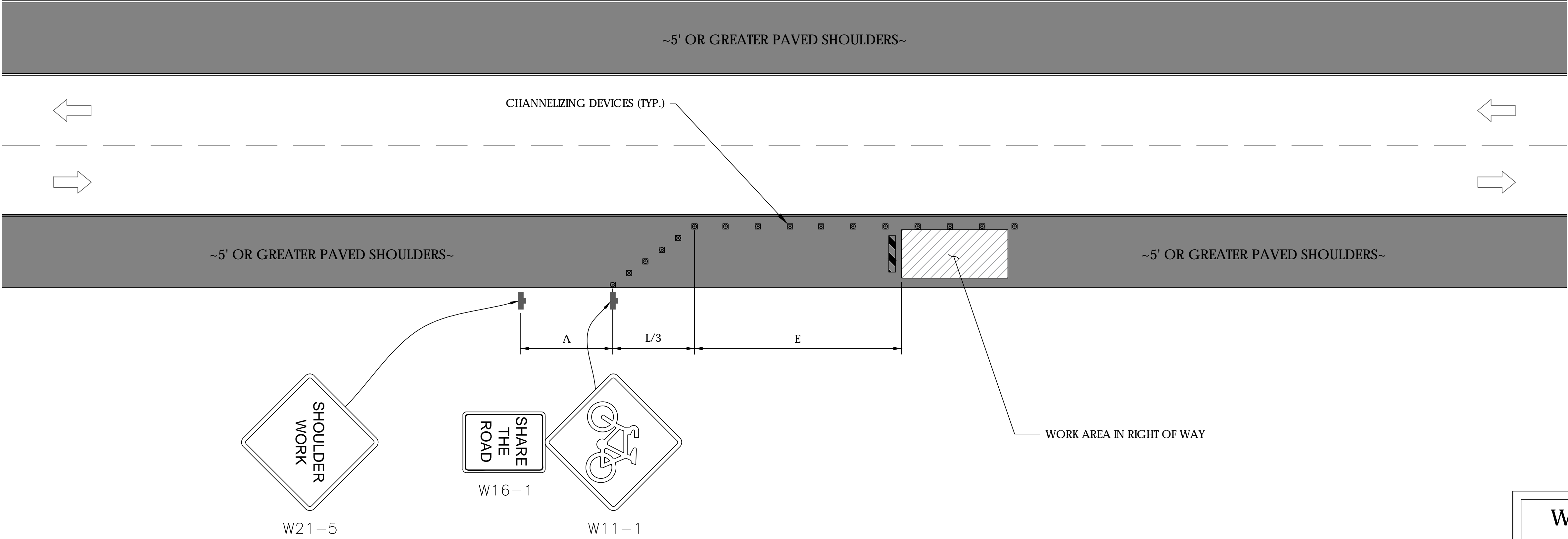
DETAILS

D1

TRAFFIC CONTROL FOR WORK ON SHOULDERS - RESIDENTIAL AREA

WORK AREA TRAFFIC CONTROL HANDBOOK 2019 14TH EDITION

PER STANDARDS AND GUIDANCE OF CA-MUTCD



WORK HOURS
7:00AM - 3:30PM

GENERAL NOTES:

- ALL WORK AND MATERIALS SHALL COMPLY WITH THE CALIFORNIA MANUAL ON UNIFORM TRAFFIC CONTROL DEVICES (MUTCD), 2019 EDITION.
- ALL STRIPING AND MARKINGS SHALL CONFORM TO THE STATE OF CALIFORNIA 2010 STANDARD PLAN A20A.
- THE CONTRACTOR SHALL PROVIDE FOR ACCESS TO ALL ADJACENT PROPERTIES.
- FLASHING YELLOW BEACONS, TYPE "B", SHALL BE USED ON ALL W20-1 SIGNS AND ON ALL TYPE III BARRICADES GUARDING THE WORK OVERNIGHT.
- ALL SIGNS SHALL BE REFLECTORIZED AND STANDARD SIZE.
- ALL TUBULAR DELINEATORS AND CONES SHALL BE 28" MINIMUM HEIGHT, REFLECTORIZED AND MAINTAINED ERECT IN THE INDICATED POSITION AT ALL TIMES, AND SHALL BE REPAIRED, REPLACED, OR CLEANED AS NECESSARY TO PRESERVE THEIR APPEARANCE AND CONTINUITY, AND SHALL INCLUDE A 12" HIGH-INTENSITY REFLECTORIZED SLEEVE..
- THE CONTRACTOR SHALL MAINTAIN, ON A CONTINUOUS BASIS, ALL SIGNS, DELINEATORS, BARRICADES, ETC., TO ENSURE PROPER FLOW AND SAFETY OF TRAFFIC DURING CONSTRUCTION.
- THE CONTRACTOR SHALL HAVE SIGNS, DELINEATORS, BARRICADES, ETC., PROPERLY INSTALLED PRIOR TO COMMENCING CONSTRUCTION.
- CONSTRUCTION OPERATIONS SHALL BE CONDUCTED IN SUCH A MANNER AS TO CAUSE AS LITTLE INCONVENIENCE AS POSSIBLE TO ABUTTING PROPERTY OWNERS.
- ADDITIONAL TRAFFIC CONTROLS, TRAFFIC SIGNS OR BARRICADING MAY BE REQUIRED IN THE FIELD. THE CONTRACTOR SHALL BE RESPONSIBLE FOR THE PLACEMENT OF ANY ADDITIONAL DEVICES NECESSARY TO ASSURE THE SAFETY TO THE PUBLIC AT ALL TIMES DURING CONSTRUCTION.
- EXACT LOCATION AND TYPE OF CONSTRUCTION SIGNS SHALL BE DIRECTED BY THE ENGINEER BASED UPON CONSTRUCTION CONDITIONS.
- MOVE DELINEATORS AND/OR CONES TO SIDEWALK DURING NON-WORKING HOURS. REMOVE BARRICADES ETC., FROM TRAVEL LANE.
- REMOVE OR TURN OFF SIGNS DURING NON-WORKING HOURS.
- ALL CONFLICTING LINES, EXISTING CURB PAINT, AND MARKINGS SHALL BE REMOVED BY WET SANDBLASTING OR OTHER APPROVED METHOD PRIOR TO INSTALLATION OF NEW/TEMPORARY STRIPING. ALL CONFLICTING RAISED PAVEMENT MARKERS SHALL BE REMOVED. PAVEMENT THAT IS DAMAGED DUE TO REMOVAL OF MARKERS SHALL BE REPAIRED TO THE SATISFACTION OF THE CITY ENGINEER AND/OR STATE INSPECTOR.
- DIMENSIONS BASED ON GIS MAPPING DATA AND/OR RECORD DRAWINGS AND NOT A SURVEY.
- TIME OF LANE CLOSURE TO BE IN ACCORDANCE WITH REQUIREMENTS OF JURISDICTION.
- ADDITIONAL ADVANCED FLAGGERS MAY BE REQUIRED. FLAGGER SHOULD STAND IN A CONSPICUOUS PLACE, BE VISIBLE TO APPROACHING TRAFFIC. PLACE A MINIMUM OF FOUR CONES AT 40-FT INTERVAL IN ADVANCE OF FLAGGER STATION AS SHOWN.

SPEED MPH (2)	DIMENSION A/B/C ADVANCE WARNING SIGN SPACING (5)	DIMENSION L MERGIN TAPER LENGTH	DIMENSION L/2 SHIFTING TAPER LENGTH	DIMENSION L/3 MINIMUM SHOULDER TAPER	DIMENSION "E" BUFFER SPACE (4-A) AND FLAGGER STATION STOPPING SIGHT DISTANCE (4-B) (0%) (-3%) (-6%)	MAXIMUM CHANNELIZER TAPER SPACING (3)	MAXIMUM CHANNELIZER TANGENT SPACING (3)	MAXIMUM CHANNELIZER CONFLICT SPACING (6)
MPH	FT	ft	ft	ft	ft	ft	ft	ft
25	100	125	65	45	(155) (160) (135)	25	50	12
30	250	180	90	60	(200) (205) (215)	30	60	15
35	250	245	125	85	(250) (260) (275)	35	70	17
40	250	320	160	110	(305) (315) (335)	40	80	20
45	350	540	270	180	(360) (380) (400)	45	90	22
50	350	600	300	200	(425) (450) (475)	50	100	25
55	500	660	330	220	(495) (520) (555)	50	100	25
60	500	720	360	240	(570) (600) (640)	50	100	25
65	500	780	390	260	(645) (685) (730)	50	100	25
1	WORK ON FREEWAYS AND EXRESSWAYS SHALL MEET THE CALTRANS STANDARD PLANS AND STANDARD SPECIFICATION REQUIREMENTS							
2	POSTED SPEED OR OBSERVED OPERATION SPEED (WHICHEVER IS GREATER)							
3	CHANNELIZER SPACING SHALL BE REDUCED BY HALF AT AREAS WHERE WORK IS TAKING PLACE ON CURVES OR AREAS OF HEAD-ON CONFLICT							
4-A	BUFFER SPACE MAY BE INSERTED IN LOW-SPEED URBAN AREAS AND SHOULD BE INSERTED IN HIGH-SPEED URBAN AND RURAL AREAS							
4-B	THE STOPPING SIGHT DISTANCE SHOULD ENABLE ROAD USERS TO SEE THE PRIMARY FLAGGER STATION AND SAFELY STOP							
5	SIGN SPACING IN RURAL AREAS SHOULD BE 500 FT							
6	** TABLE 6F-101 (CA)							

Charter
Spectrum

9260 TOPANGA CANYON BLVD
CHATSORTH CA, 91311

alpha
AN ENERSYS COMPANY

3767 ALPHA WAY
BELLINGHAM, WA 98226

J5 INFRASTRUCTURE
PARTNERS

23 MAUCHLY, STE 110
IRVINE, CA 92618

J5 PROGRAM ID: ALP-CA-CPUC
J5 PROJECT ID: P-065638

ISSUE STATUS

REV	DATE	DESCRIPTION	BY
A	11/02/21	90% CD	II
B	11/05/21	90% CD	JW
0	12/13/21	100% CD	CG
1	02/24/22	LA CITY REQ. UPDATE	MZ
2	07/21/22	PCC #1	JW
3	08/23/22	PCC #2	JW
C	9/28/2022	PER CITY COMMENT	VVD

SEAL

SITE INFORMATION

SITE ID:
AD051X_AD051A

SITE ADDRESS:
11301 W OSBORNE ST ,
SYLMAR, CA 91342

SHEET TITLE:

TRAFFIC CONTROL

TC1