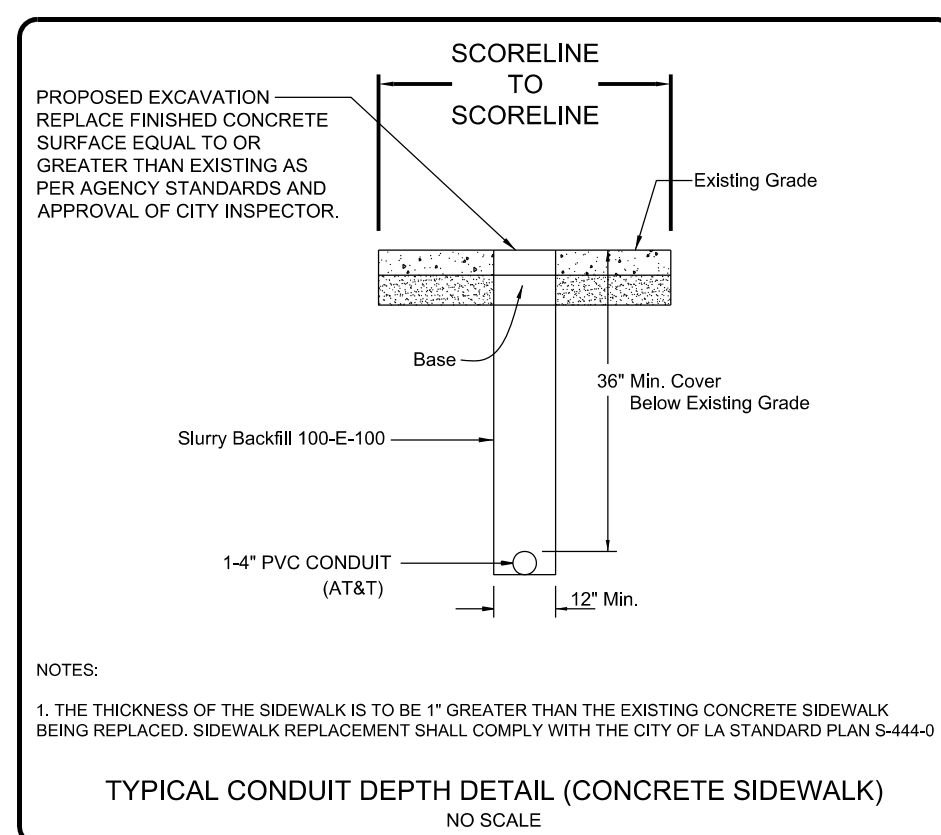


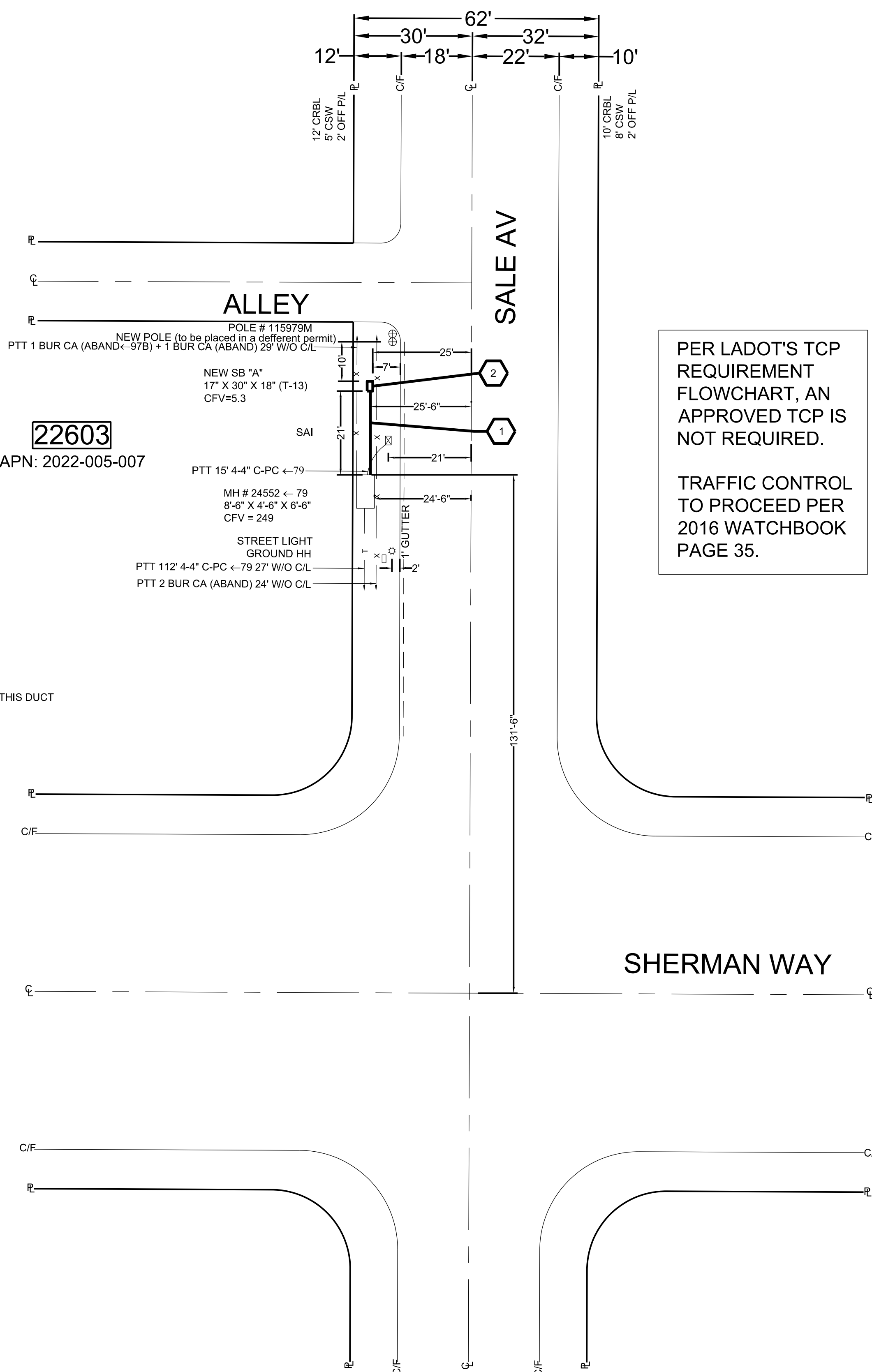
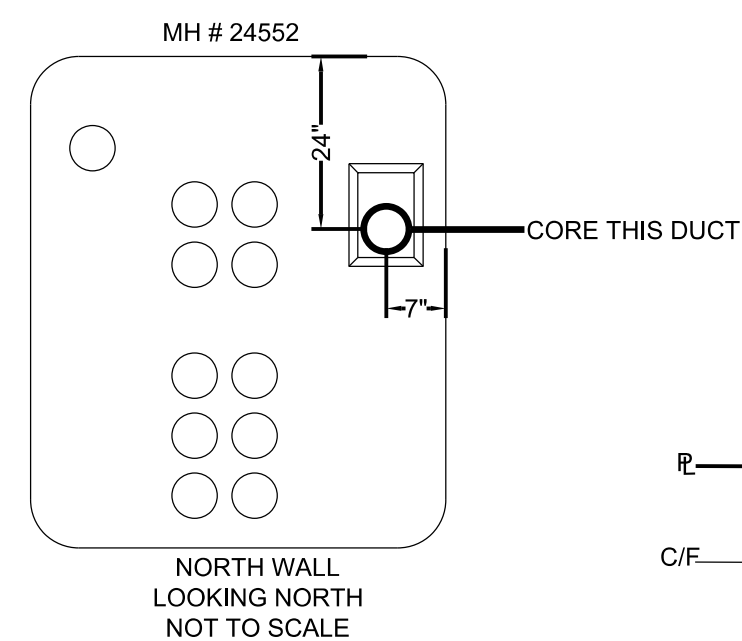
PLACEMENT DATA

- ① PL 24 1-4" C-PC
PTS 77 OR EQUIV.
PM 1 DU 24"
R/C 4C
TL = MH # 24552 TO NEW SB "A" = 24' VERIFY

- ② PL SB "A"
17" X 30" X 18" T-13 OR INTERSET (T-13)
E/W BMT BRACKET
R/C 4C
NEW BASIS UTILITY VAULT MODEL NUMBER (FCA243624T-97XXX)
MODEL NUMBER AKA (NONE)



NOTE:
ONLY THOSE EXISTING
SUBSTRUCTURES WITHIN 10-FT OF
THE PROPOSED CONDUIT ARE SHOWN



PER LADOT'S TCP
REQUIREMENT
FLOWCHART, AN
APPROVED TCP IS
NOT REQUIRED.

TRAFFIC CONTROL
TO PROCEED PER
2016 WATCHBOOK
PAGE 35.

STREET LIGHTING NOTES TO CONTRACTOR

The contractor shall protect and maintain all street lighting facilities existing in the work area. Should any damage to the street lighting system occur, the contractor shall immediately notify the Bureau of Street Lighting, Field Operations Division, by telephoning (323) 913-4743. After 4:30 PM Monday through Thursday, or 3:30 PM on Friday, contact the Electric Trouble Board of the Department of Water and Power by telephoning (800) 821-5278 from the (213) area code, or (800) 821-5279 from the (818) area code.

The contractor shall arrange for the immediate repair and restoration of the damaged street lighting system at no cost to the City. A licensed electrical contractor is required to make all repairs necessary to the street lighting facilities.

The contract shall install all proposed facilities 12 inches clear of the street lighting foundations, pullboxes, and conduits, except where otherwise stated herein. Two business days prior to working near the street lighting circuit the contractor shall arrange for the presence of a City of Los Angeles, Public Works Inspector, (213) 580-5080 or (818) 374-1188, to verify all clearance requirements are met. Where a conflict exists between the street lighting facilities and the proposed improvements, approval for relocation of the street lighting facilities may be obtained by contacting the Street Lighting Engineer at (213) 847-1817.

The contractor shall proceed with extreme caution when working near the high voltage series circuit. Unauthorized work on the series circuit can result in severe injury or death. The contractor shall notify the Bureau of Street Lighting, Field Operations Division (323) 913-4743 two business days prior to working near the street lighting circuit.

This plan has been reviewed by the Bureau of Street Lighting and approved for the encroachment of new utilities within the Bureau of Street Lighting easement as specified herein and within this plan:

of vault locations: _____ # of conduit locations: _____
Linear footage of conduit: _____ ft

Approved by: _____
Director, Bureau of Street Lighting Date _____

**CITY OF L.A. STREET LIGHTS
INFORMATION**

SEE C.P. DRAWING FOR LOCATION & TIES
OF STREET LIGHTS IN THE NEW CONSTRUCTION AREA



CONSTRUCTION REQUIREMENTS

1. MAINTAIN MINIMUM COVER OF 36" BELOW FLOW LINE.
2. VERIFY EXISTING SUBSTRUCTURES PRIOR TO EXCAVATION.
3. ALL 4" TO CONFORM TO PTS-77 OR EQUIVALENT.
4. ALL 2" TO CONFORM TO PTS-66 OR EQUIVALENT.
5. BACKFILL SHALL BE CEMENT SLURRY
6. DO NOT BACKFILL OVER ANY TELEPHONE BURIED SPLICE LOCATIONS UNTIL AUTHORIZED BY TELEPHONE COMPANY INSPECTOR.
7. PLACE # 6 TINNED GROUND WIRE AT BONDING POINTS, (SEE BONDING DETAIL)
8. PLACE PULL ROPE IN NEW CONDUIT.
9. DO NOT CUT CURB & GUTTER.
10. ALL SURFACES AND LANDSCAPES WHICH HAVE BEEN REMOVED OR DAMAGED IN THE COURSE OF CONSTRUCTION SHALL BE RECONSTRUCTED OR REPLACED TO AT LEAST EQUAL OR BETTER THAN THE PREVIOUS OR ADJACENT SURFACE.
11. ALL TRAFFIC CONTROL TO BE IN ACCORDANCE WITH THE CALIFORNIA MANUAL ON UNIFORM TRAFFIC CONTROL DEVICES (MUTCD) LATEST EDITION.
12. PER AT&T GUIDELINES, ALL HANDHOLES, SPLICE BOXES, AND MANHOLES TO BE PURCHASED FROM THE APPROVED VENDOR DETERMINED BY CONTRACT ADMINISTRATOR.

THIS PROJECT REQUIRES EXCAVATION. CONSTRUCTION WILL UTILIZE AND IMPLEMENT ALL BEST MANAGEMENT PRACTICES (BMP'S) AS REQUIRED TO ENSURE COMPLIANCE WITH AT&T POLICY LETTER ISSUE FEBRUARY 21, 2003 AND REVISED IN OCTOBER 2005 BY ENVIRONMENTAL MANAGEMENT CONCERNING STORM WATER PERMITTING AND STORM WATER POLLUTION PREVENTION PLANS (SWPPPs) AND IN ACCORDANCE WITH THE CLEAN WATER ACT (1972) AND EPA REGULATIONS PUBLISHED IN 1990 AS MODIFIED BY THE PHASE II RULE IN 1999.

LOCATION: SALE ST, W/S OF THE STREET, 131'-6" N/O C/L OF SHERMAN WAY.

DESCRIPTION: PLACE 24' OF 1-4" C-PC DUCT FROM MH # 24552 TO NEW SB "A" & PLACE NEW SB "A" (T-13).

TRENCH WIDTH AND DEPTH (TRENCH WIDTH = 12" AND DEPTH TO SUBGRADE = 3'-6").

TRENCH BACKFILL AND A/C PAVEMENT RESURFACING SHALL FOLLOW THE LATEST VERSION OF LA CITY STANDARD PLAN S-477-2.

STREET TYPE	SOIL CLASS	PROPOSED BACKFILL
MAJOR	N/A	N/A
SECONDARY	N/A	N/A
LOCAL	N/A	N/A
ALLEY	N/A	N/A

CONDUIT RECORD: B123C643-16 SHERMAN WAY - SALE AV TO ASMAN AV	
SUB MAP #: 183-97	
STREET NAME: N/A	
MATERIAL: N/A	
LINEAR FEET: N/A	

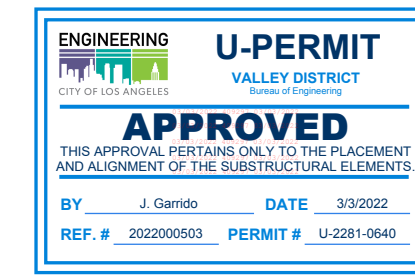
EXCAVATION DATA	
CITY OF:	LOS ANGELES (VALLEY)
PLACING:	UG CONDUIT, T-13
EXCAVATION IN CONCRETE SIDEWALK (21 X 1') + (1.5' X 2.5') = 25 SQ FT	
EXCAVATION IN ASPHALT STREET	
EXCAVATION IN ASPHALT ALLEY	
EXCAVATION IN DIRT	
TOTAL EXCAVATION:	25 SQ FT

RESURFACING DATA	
RESURFACING CONCRETE	10(2.5' x 2.5') = 63 SQ FT
RESURFACING ASPHALT	
TOTAL RESURFACING:	63 SQ FT
NUMBER OF CUTS:	2

DATE	ATTID	LAYOUT ENGINEER
01/13/2022		FELITO LINESES
		TELEPHONE NUMBER 818-424-6138
		EMAIL ADDRESS FL3534@ATT.COM
02/22/2022	FL3534	PROJECT ENGINEER ANDREW FIOCK
		TELEPHONE NUMBER 818-373-8521

DATE	REVISIONS
	GEOCO B1-23 CENTRAL OFFICE CANOGA PARK
	UNDERGROUND CONSTRUCTION PROJECT NUMBER

SCALE: 1" = 20'	THOMAS GUIDE: 529-H5	PROJECT NUMBER: A01PYLM
FILENAME: B123 A01PYLM.dwg	DRAWING: 1/1	



CYIENT, Inc.
275 E. HILLCREST, DR., Suite 210
Thousand Oaks, CA 91360
(805) 214-8379